

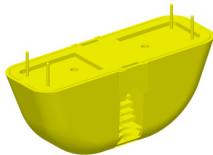
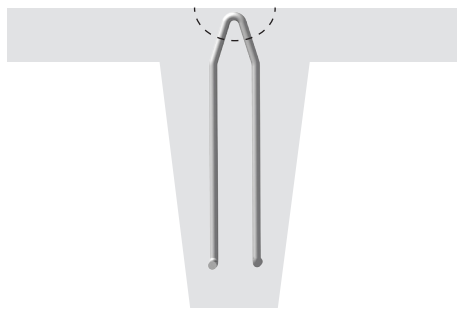
TT ANCHOR SYSTEM



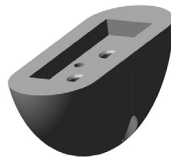
concrete accessories

CONAC TT ANCHOR SYSTEM

Designed for lifting precast double tees, available in 7.5T and 9T. Rubber and plastic recess formers available.



Plastic Recess Former for TT-Anchor



Rubber Recess Former for TT-Anchor



TON	PART NUMBER	LENGTH (L)	OUTSIDE WIDTH (W)	INSIDE WIDTH (H)	DIAMETER (D)	SWL TENSION (LBS)	UML TENSION (LBS)
7.5	DOUBLE T 7.5T/16 MM	18"	4-3/8"	3-1/8"	5/8"	15,000	60,000
9	DOUBLE T 9T/20 MM	22-7/8"	4-7/8"	3"	3/4"	18,000	72,000

UML= Ultimate Mechanical Load in tension.
Safe working loads based on 4:1 Safety Factor in 3,500 psi normal weight concrete.



CALL US TOLL FREE
1-800-336-2598
www.conacweb.com