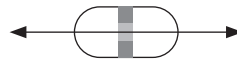
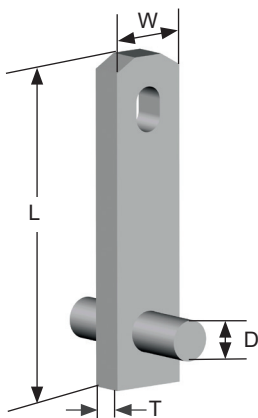


T-Bar Anchor

Achieves high tension capacity through the steel bar, capable in shear applications. Commonly used for backstripping, also can be used for erection and edge lifting.

TON	SYS CODE	ITEM CODE	LENGTH (L)	WIDTH (W)	THICK. (T)	BAR DIA. (D)	MIN PANEL THICK.	MIN EDGE DIST.	SWL SHEAR (LBS)	SWL TENS. (LBS)	UML (LBS)
2	2.5	FTA02x4-1	4"	1-1/4"	3/8"	1/2"	4-3/4"	8"	4000	4000	16000
4	5	FTA04x4-1/4-1	4 1/4"	1-1/2"	5/8"	3/4"	4-5/8"	8-1/2"	5500	5500	22000
4	5	FTA04x5-1/4-1	5 1/4"	1-1/2"	5/8"	3/4"	5-5/8"	10-1/2"	8000	8000	32000
4	5	FTA04x6-1/4-1	6 1/4"	1-1/2"	5/8"	3/4"	6-5/8"	12-1/2"	8000	8000	32000
4	5	FTA04x7-1/4-1	7 1/4"	1-1/2"	5/8"	3/4"	7-5/8"	14-1/2"	8000	8000	32000
4	5	FTA04x7-3/4-1	7 3/4"	1-1/2"	5/8"	3/4"	8-1/2"	15-1/2"	8000	8000	32000

Safe working loads based on approximate 4:1 Safety Factor in 3,500 psi normal weight concrete. UML= Ultimate Mechanical Load



When used in shear, the load should be perpendicular to the face of the anchor.

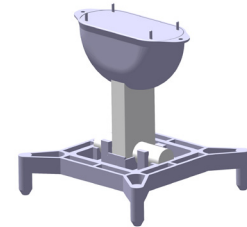
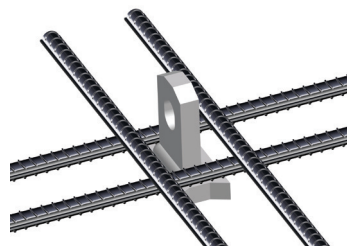
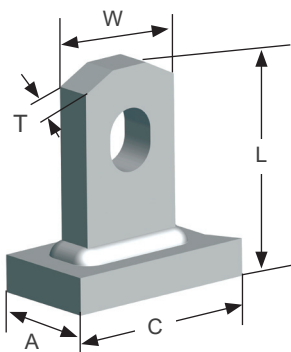


Plate Anchor

Bottom plate allows high strength for stripping and erecting. Reinforcement required to develop SWL.

TON	SYS CODE	ITEM CODE	ANCHOR DEPTH (L)	BODY WIDTH (W)	BODY THICK. (T)	BASE WIDTH (A)	BASE LENGTH (C)	MIN EDGE DIST.	SWL TENSION UNREINFORCED (LBS)	SWL TENSION REINFORCED (LBS)	UML (LBS)
2	2.5	FPA02023	2-1/4"	1-1/4"	3/8"	1-1/4"	3-3/4"	4-1/2"	2043	4000	16000
4	5	FPA04030	3"	1-1/2"	5/8"	1-1/2"	3"	5-3/4"	3422	8000	32000
4	5	FPA04035	3-1/2"	1-1/2"	5/8"	1-1/2"	3"	6-1/2"	4095	8000	32000
4	5	FPA04044	4-3/8"	1-1/2"	5/8"	1-1/2"	3-7/8"	7-3/4"	5178	8000	32000
4	5	FPA04063	6-1/8"	1-1/2"	5/8"	1-1/2"	3-7/8"	10-1/2"	8000	8000	32000
8	10	FPA08061	6-1/4"	2-1/2"	3/4"	2-1/2"	5"	11-1/2"	7726	12000	64000
8	10	FPA08071-1	7-1/8"	2-1/2"	3/4"	2-1/2"	4"	12"	9054	16000	64000
8	10	FPA08073	7"	3"	3/4"	3"	4"	12"	9054	16000	64000
8	10	FPA08093	9"	3"	3/4"	3"	4"	15-1/2"	12920	16000	64000

Safe working loads based on approximate 4:1 Safety Factor in 3,500 psi normal weight concrete. UML= Ultimate Mechanical Load



Reinforced Allowable Tension Capacities require the use of additional rebars positioned as shown over the base plate of the anchor.
 For 2 Ton anchors, use 2 x #4 rebars x 12" long each direction.
 For 4 and 8 Ton anchors, use 2 x #4 rebars x 18" long each direction.