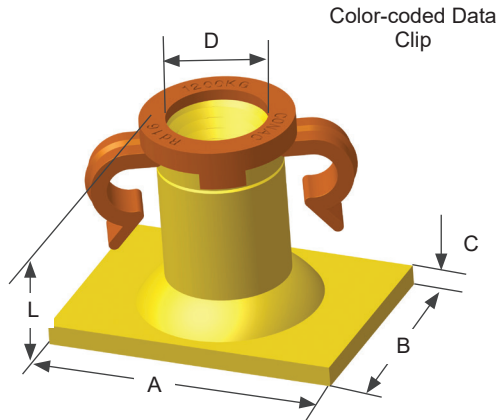


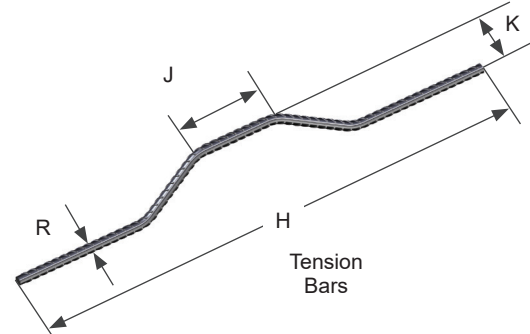
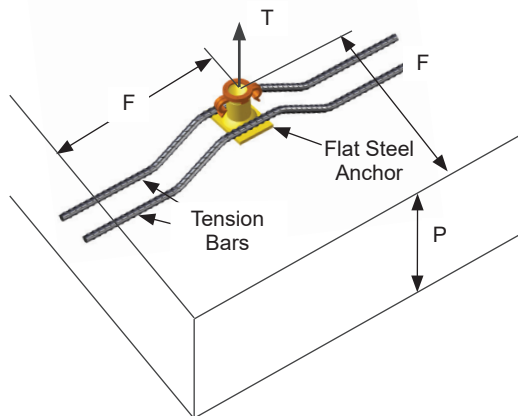
Flat Steel Anchors

Ideal for backstripping or face lifting thin precast panels. Supplied with color coded reinforcement clip for easy identification. Tension loads require the use of two Tension Bars per anchor. Shear loads require the use of two Tension Bars and one Shear Vee per anchor. Stocked in plated finish.



ITEM CODE	SWL (LBS)	THREAD SIZE (D)	ANCHOR DEPTH (L)	BASE LENGTH (A)	BASE WIDTH (B)	BASE THICK. (C)
FSA005	1000	Rd12x1.75	1-3/16"	1-3/8"	1"	1/8"
FSA008	1600	Rd14x2.0	1-5/16"	1-3/8"	1-3/8"	1/8"
FSA012	2400	Rd16x2.0	1-3/8"	2"	1-3/8"	1/8"
FSA016	3200	Rd18x2.5	1-3/4"	2-3/8"	1-3/4"	3/16"
FSA020	4000	Rd20x2.5	1-7/8"	2-3/8"	2-3/8"	3/16"
FSA025	5000	Rd24x3.0	2-1/8"	3-1/8"	2-3/8"	3/16"
FSA040	8000	Rd30x3.5	2-7/8"	3-7/8"	3-1/8"	1/4"
FSA063	12600	Rd36x4.0	3-5/16"	5-1/8"	3-7/8"	1/4"
FSA080	16000	Rd42x4.5	3-7/8"	5-1/8"	5-1/8"	5/16"
FSA125	25000	Rd52x5.0	4-5/8"	5-7/8"	5-1/8"	5/16"

Safe working loads based on approximate 4:1 Safety Factor in 2,200 psi normal weight concrete.



Note: FTB Tension Bars and FSV Shear Vees are made from Grade 60 reinforcing rod.

TENS. BAR PART NO	USE W/ FLAT STEEL ANCHOR	REINF. SWL TENSION (LBS)	MINIMUM EDGE DISTANCE (F)	MINIMUM PANEL THICK. (P)	DIA. (R)	OVERALL LENGTH (H)	CROWN LENGTH (J)	OFFSET (K)
FTB005	FSA005	1060	7"	2-3/4"	1/4"	10"	2-3/8"	1-1/8"
FTB008	FSA008	1720	7"	3-1/8"	1/4"	14"	2-3/8"	1-3/8"
FTB012	FSA012	2580	9-7/8"	3-3/8"	5/16"	16-1/2"	3-1/2"	1-3/8"
FTB016	FSA016	3440	11-3/4"	3-3/4"	5/16"	21"	3-1/2"	1-1/2"
FTB020	FSA020	4300	11-3/4"	4"	5/16"	25-1/4"	3-1/2"	1-1/2"
FTB025	FSA025	5360	15-3/4"	4-1/2"	3/8"	25-1/4"	3-1/2"	2"
FTB040	FSA040	8600	19-5/8"	5-1/2"	7/16"	32-3/4"	3-1/2"	2-1/8"
FTB063	FSA063	13540	25-1/2"	6-3/8"	9/16"	45"	5-1/2"	2-3/8"
FTB080	FSA080	17180	25-1/2"	6-7/8"	5/8"	49"	5-1/2"	2-3/8"
FTB125	FSA125	26860	25-1/2"	8-1/2"	3/4"	60"	5-1/2"	3"

Safe working loads based on approximate 4:1 Safety Factor in 2,200 psi normal weight concrete.