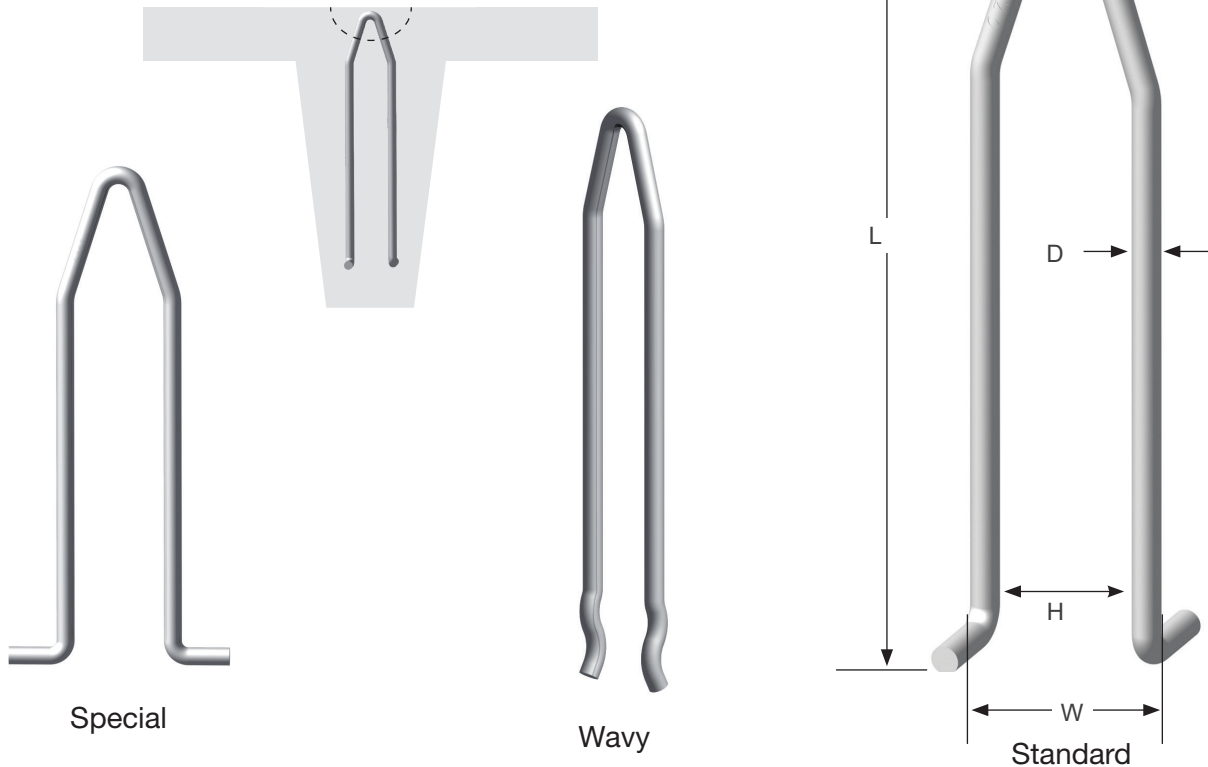


Flat Steel System

CONAC
Concrete Lifting Solutions

TT Anchor System

Designed for lifting precast double tees, available in 7.5T and 9T.
Available in three styles to accommodate different strand configurations.



TON	SYS CODE	ITEM CODE	LENGTH (L)	Standard	Special	Wavy	INSIDE WIDTH (H)	DIAMETER (D)	SWL TENSION (LBS)	UML TENSION (LBS)
				OUTSIDE WIDTH (W)	OUTSIDE WIDTH (W)	OUTSIDE WIDTH (W)				
7.5	10	TT 7.5T	18"	4-3/8"	7-3/4"	N/A	3-1/8"	5/8"	15000	60000
10*	10	TT 10T	22-7/8"	4-7/8"	7-7/8"	4-7/8"	3"	3/4"	20000	80000

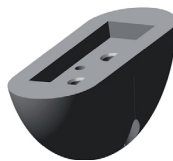
UML= Ultimate Mechanical Load in tension

Safe working loads based on approximate 4:1 Safety Factor in 3,500 psi normal weight concrete.

*CONAC FRC11 B (11 Ton Ring Clutch) must be used for 20,000 SWL.

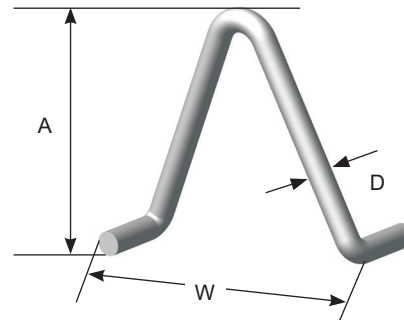
TT Recess Former

Designed for use with CONAC Double Tee and Sage Lift anchors.



Safe Lift Anchor

Designed for face-lifting solid panels or insulated panels with sufficient thickness of back wythe.



ITEM CODE	ANCHOR DEPTH (A)	ANCHOR WIDTH (W)	BODY DIAMETER (D)	PANEL DEPTH	SWL TENSION (LBS)	SWL SHEAR (LBS)
SF-ANCHOR 6T	7-3/4"	6"	.70"	8"	10000	13000

Safe working loads based on approximate 4:1 Safety Factor in 4,000 psi normal weight concrete