

Form Accessories



Formlatch

Corner clamp for a variety of forms.



PART N.	SIZE
FORMLATCH BODY	15" Arm
FORMLATCH BALL	

Chamferfix

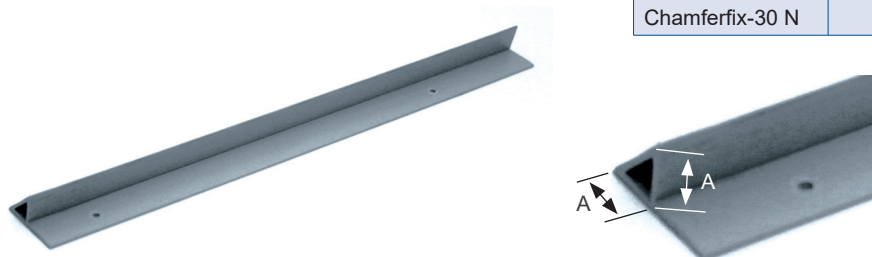
For forming chamfered edges to columns and beams, Chamferfix re-usable fillet is a thick-walled extrusion of impact-strength PVC.



REFERENCE	MEASUREMENT "A"	LENGTH	PACKING FT/BNDL
Chamferfix 6	1/4"	8.25 FT	330
Chamferfix 11	3/8"	8.25 FT	330
Chamferfix 15	5/8"	8.25 FT	330
Chamferfix 20	3/4"	8.25 FT	330
Chamferfix 25	1"	8.25 FT	165
Chamferfix 30	1 1/4"	8.25 FT	165

Chamferfix With Nailing Flange

With nailing holes in the flange, this type of Chamferfix makes for easy fitting at corners of molds, and also safe stripping, which helps to achieve maximum reuse.



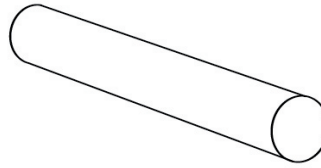
ITEM CODE	MEASUREMENT "A"	LENGTH	PACKING FT/BNDL
Chamferfix-11 N	3/8"	8.25 FT	330
Chamferfix-15 N	5/8"	8.25 FT	330
Chamferfix-20 N	3/4"	8.25 FT	330
Chamferfix-25 N	1"	8.25 FT	165
Chamferfix-30 N	1 1/4"	8.25 FT	165

Other Accessories



De-Bond Sheathing

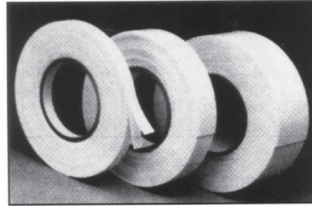
Flexible polymer plastic tubing for effective debonding of prestressed strands, available in 10' lengths for up to 9/16" strand.



ITEM CODE	SIZE	QTY/CTN.
DESHE	Slit Version	100 x 10'
DESHEN	Unslit Version	100 x 10'

Double-Sided Tape

Highest tack and shear strength synthetic adhesive system ideal for attaching inserts and block-outs to forms. Our 1/16" tape is standard.



ORDER CODE	SIZE	QTY/CTN.
DST 05	1/2" x 1/16" x 108' Reel	18
DST 10	1" x 1/16" x 108' Reel	9
DST 20	2" x 1/16" x 108' Reel	5
DST 30	3" x 1/16" x 108' Reel	3
DST 40	4" x 1/16" x 108' Reel	3
DST 60	6" x 1/16" x 108' Reel	2

Strand Recesses

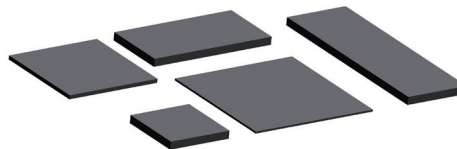
Foam plug designed to form an easily patched void at the ends of prestressed strands.



ITEM CODE	SIZE	QTY/ CTN.
STREC	1-1/8"x1-1/8"x1"	5000

Standard Plastic Shims

High compressive (5,000-6,000 psi), high strength polymer plastic designed to level concrete members during erection. This product exhibits extreme stability while it prevents rust, stained concrete and spalling. It is also scored for convenience of application, and will not fracture under load. Custom sizes can be made to order.



ITEM CODE	SIZE	QTY/CTN.
SH 226	2"x2"x1/16"	2000
SH 228	2"x2"x1/8"	2000
SH 224	2"x2"x1/4"	1000
SH 336	3"x3"x1/16"	2000
SH 338	3"x3"x1/8"	2000
SH 334	3"x3"x1/4"	1000
SH 246	2"x4"x1/16"	2000
SH 248	2"x4"x1/8"	2000
SH 244	2"x4"x1/14"	1000
SH 446	4"x4"x1/16"	1000
SH 448	4"x4"x1/8"	1000
SH 444	4" x 4"x1/4"	500
SH 266	2"x 6"x1/16"	1000
SH 268	2"x 6"x1/8"	1000
SH 264	2"x 6"x1/4"	500

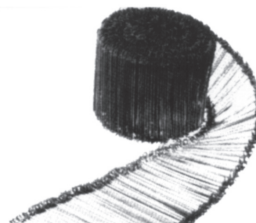
Shimpaks

Ideal for placing and leveling large load bearing panels, each shimpak is held together with a flexible band for quick and easy access. Other sizes available upon request.

ITEM CODE	SIZE	QTY/CTN.
SHP 33	3"x 3" x 1-1 1/16"	100
SHP 44	4"x 4" x 1-1 1/16"	100
SHP 46	4"x 6" x 1-1 1/16"	50

Rebar Tie Wire & Double Loop Ties

The most comprehensive line of wire products for the concrete construction industry is available regionally from CONAC, 4" - 16" long and packaged 5000 per roll. Available in plain, galvanized or PVC.



ITEM CODE	SIZE	QTY/CTN.
WT516B	5" - 16ga Blk Loop	5000
WT616B	6" - 16ga Blk Loop	5000
WT816B	8" - 16ga Blk Loop	5000
WT1016B	10" - 16ga Blk Loop	5000
WT1016Y	10" - 16ga PVC Coat	5000
WT1216B	12" - 16ga Blk Loop	5000
WT1616B	16" - 16ga Blk Loop	2500

Wire Tie Roll

For tying rebar manually. Rebar Tie Wire is available in either black annealed or 16 ga. (?) Galvanized wire and comes in 20 3-1/2 lb. coils per carton. Made of black annealed wire.



ITEM CODE	SIZE	QTY/ CTN.
WT16	16 Ga. 3-1/2 LB	20 pcs