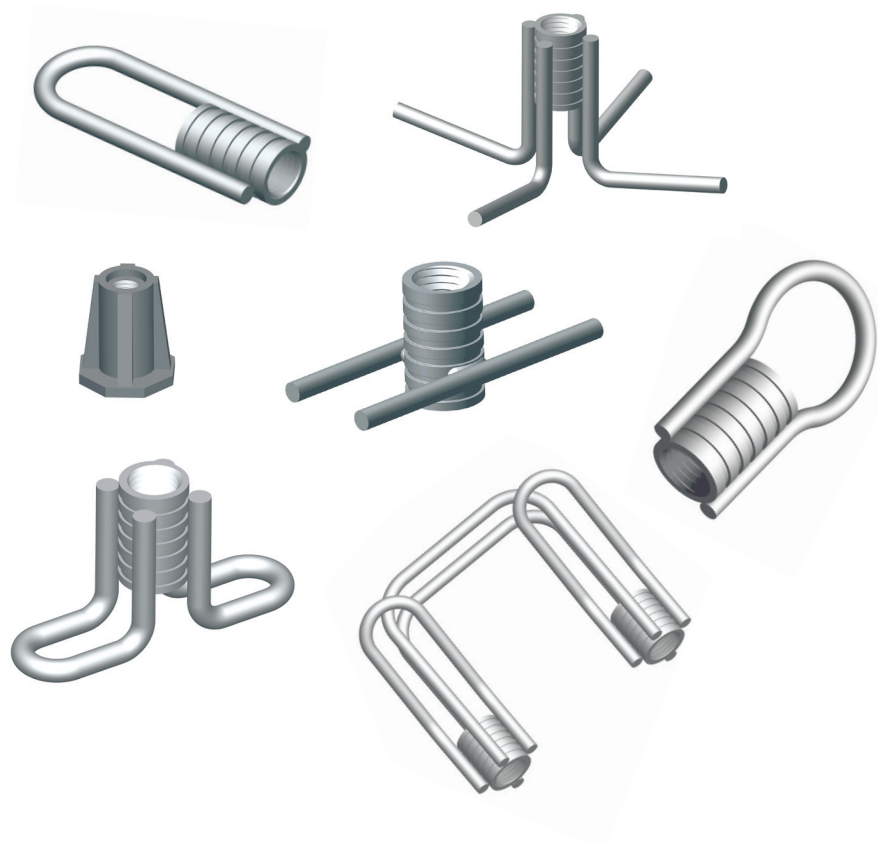


# Ferrule Inserts

## Connections



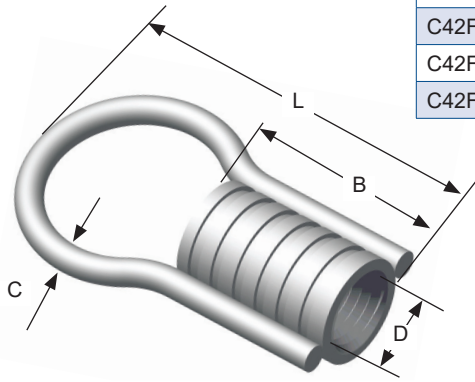
# Ferrule Inserts

**Note:** Ferrule inserts are for connections only and should not be used for lifting. All ferrule inserts should be set back 1/2" from face of concrete. Standard finish is electroplated. Also available plain (Self Colored).

## Ferrule Loop Inserts

N/C closed end threaded ferrule is welded to a single round loop strut. Intended as a connection insert.

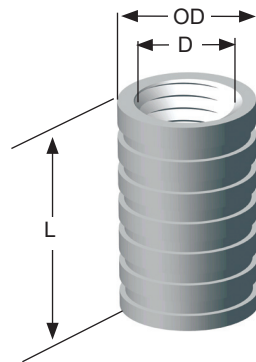
ITEM CODE	THREAD (D)	INSERT LENGTH (L)	THREAD DEPTH (B)	WIRE DIAMETER (C)	SWL (LBS)	SUGGESTED EDGE DISTANCE
C42F025	1/4"-20 NC	2-3/4"	1-1/4"	0.243"	650	5"
C42F038	3/8"-16 NC	2-3/4"	1-1/4"	0.243"	2000	5"
C42F050	1/2"-13 NC	2-3/4"	1-3/8"	0.262"	2000	5"
C42F058	5/8"-11 NC	3-1/4"	1-5/8"	0.262"	2400	5"
C42F075	3/4"-10 NC	3-1/2"	1-5/8"	0.375"	2400	5"
C42F078	7/8"-9 NC	6"	1-5/8"	0.375"	5300	8"
C42F100	1"-8 NC	6"	1-5/8"	0.375"	5300	8"



Safe working loads based on approximate 3:1 Safety Factor in 3,000 psi normal weight concrete. Stainless steel available in some sizes.

## Ferrule Only

Plain ferrule can be furnished for fabricating special inserts at the job site.

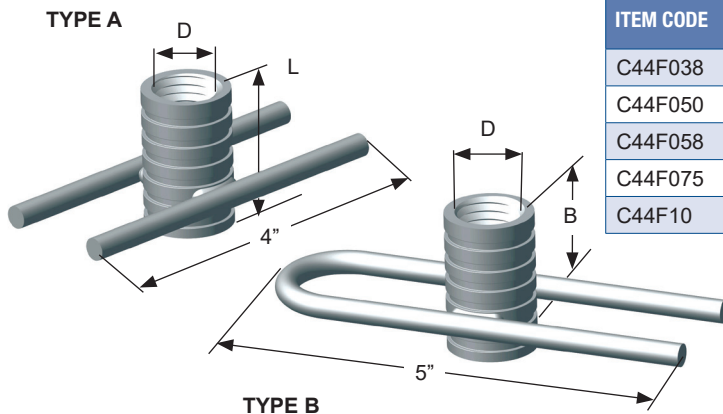


ITEM CODE	THREAD (D)	LENGTH (L)	OUTSIDE DIA. (OD)
C43F025	1/4" - 20 NC	1-1/4"	9/16"
C43F038	3/8" - 16 NC	1-1/4"	9/16"
C43F050	1/2" - 13 NC	1-3/8"	11/16"
C43F058	5/8" - 11 NC	1-5/8"	7/8"
C43F075	3/4" - 10 NC	1-5/8"	1"
C43F078	7/8" - 9 NC	1-5/8"	1-1/4"
C43F100	1" - 8 NC	1-5/8"	1-3/8"

Safe working loads based on approximate 3:1 Safety Factor in 3,000 psi normal weight concrete. Stainless steel available in some sizes.

## Thin Slab Ferrule Inserts

Very versatile insert intended for use as an anchorage insert in relatively thin slab concrete. N/C closed end ferrule insert is welded to parallel struts. Intended as a connection insert.



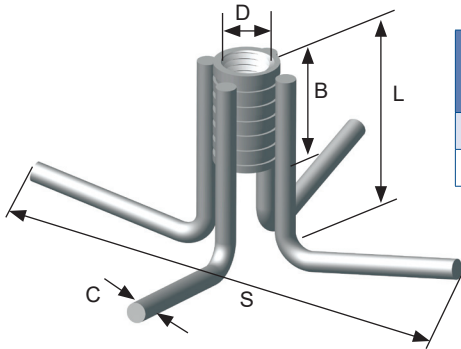
ITEM CODE	THREAD (D)	INSERT LENGTH (L)	THREAD DEPTH (B)	SWL (LBS)	SUGGESTED EDGE DISTANCE
C44F038	3/8"-16 NC	1-1/4"	1-1/4"	450	2-1/2"
C44F050	1/2"-13 NC	1-3/8"	1-3/8"	900	2-3/4"
C44F058	5/8"-11 NC	1-5/8"	1-5/8"	1000	3"
C44F075	3/4"-10 NC	1-5/8"	1-5/8"	1600	3"
C44F10	1"-8 NC	1-5/8"	1-5/8"	1600	3"

Safe working loads based on approximate 3:1 Safety Factor in 3,000 psi normal weight concrete.

**Note:** Ferrule inserts are for connections only and should not be used for lifting. All ferrule inserts should be set back 1/2" from face of concrete. Standard finish is electroplated. Also available plain (Self Colored).

## Thin Slab 4 Leg Ferrule Inserts

Very versatile insert intended for use as an anchorage insert in relatively thin slab concrete. N/C closed end ferrule insert is welded to 4 "L" shaped legs. Intended as a connection insert.



ITEM CODE	THREAD (D)	INSERT LENGTH (L)	THREAD DEPTH (B)	WIRE DIAMETER (C)	SPREAD (S)	SWL (LBS)	SUGGESTED EDGE DISTANCE
C52F0753	3/4"-10 NC	3"	1-5/8"	0.306"	7-1/6"	<b>2650</b>	7"
C52F104	1"-8 NC	4"	1-5/8"	0.375"	9-3/8"	<b>4000</b>	9"

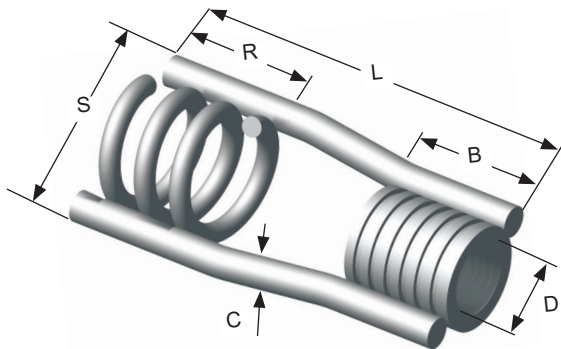
Safe working loads based on approximate 3:1 Safety Factor in 3,000 psi normal weight concrete.

## Expanded Ferrule Inserts

A Ferrule is welded to two or four wire side struts. At the opposite end of the struts from the thread ferrule is an expanded wire embedment coil. These inserts offer a wide degree of casting versatility and high strength for a variety of conditions.

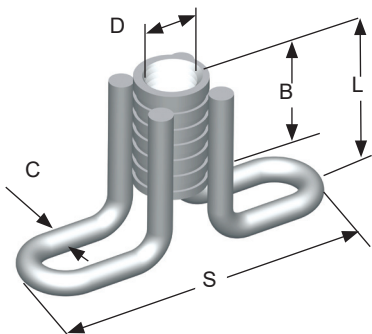
ITEM CODE	THREAD (D)	INSERT LENGTH (L)	THREAD DEPTH (B)	WIRE DIAMETER (C)	SPREAD LENGTH (R)	SPREAD (S)	SWL (LBS)	SUGGESTED EDGE DISTANCE
C57F-3/4	3/4"-10 NC	4-5/8"	1-5/8"	0.440"	1-1/2"	2-1/4"	<b>5660</b>	7-1/2"
C57F-1	1"-8 NC	5-5/8"	1-5/8"	0.440"	2-1/4"	2-3/4"	<b>8330</b>	11"

Safe working loads based on approximate 3:1 Safety Factor in 3,000 psi normal weight concrete.



## Flared Thin Slab Ferrule Inserts (Wing Nut Style)

N/C closed end threaded ferrule is welded to two "L" profile closed loop wire struts. Intended as a connection insert in thin slab concrete sections.



ITEM CODE	THREAD (D)	INSERT LENGTH (L)	THREAD DEPTH (B)	WIRE DIAMETER (C)	SPREAD (S)	SWL (LBS)	SUGGESTED EDGE DISTANCE
C62F05175	1/2"-13 NC	1-3/4"	1-3/8"	0.306"	4-3/4"	<b>1200</b>	5"
C62F05827	5/8"-11 NC	2-7/16"	1-5/8"	0.375"	4-3/4"	<b>2500</b>	5"
C62F07527	3/4"-10 NC	2-7/16"	1-5/8"	0.375"	4-7/8"	<b>2650</b>	5"
C62F07535	3/4"-10 NC	3-5/8"	1-5/8"	0.375"	4-7/8"	<b>4500</b>	7"
C62F10278	1"-8 NC	2-7/8"	1-5/8"	0.375"	5-1/8"	<b>2650</b>	5"
C62F10458	1"-8 NC	4-5/8"	1-5/8"	0.375"	5-1/8"	<b>6300</b>	8"

Safe working loads based on approximate 3:1 Safety Factor in 3,000 psi normal weight concrete.

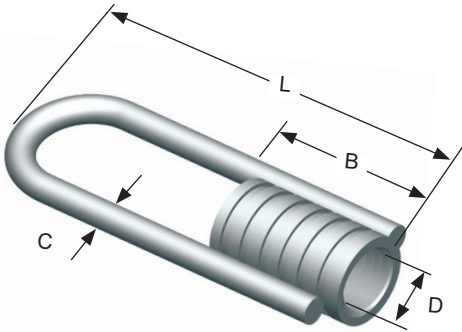
# Ferrule Inserts



**Note:** Ferrule inserts are for connections only and should not be used for lifting. All ferrule inserts should be set back 1/2" from face of concrete. Standard finish is electroplated. Also available plain (Self Colored).

## Straight Ferrule Loop Inserts

N/C closed end threaded ferrule is welded to a closed loop wire strut.



ITEM CODE	THREAD (D)	INSERT LENGTH (L)	THREAD DEPTH (B)	WIRE DIAMETER (C)	SWL (LBS)	SUGGESTED EDGE DISTANCE
C64F054	1/2"-13 NC	4-1/8"	1-3/8"	0.306"	3000	5"
C64F056	1/2"-13 NC	6-1/8"	1-3/8"	0.306"	5000	7"
C64F0584	5/8"-11 NC	4-1/8"	1-5/8"	0.375"	3000	5"
C64F0586	5/8"-11 NC	6-1/8"	1-5/8"	0.375"	5000	7"
C64F0754	3/4"-10 NC	4-1/8"	1-5/8"	0.375"	3000	5"
C64F0756	3/4"-10 NC	6-1/8"	1-5/8"	0.375"	5000	8"
C64F0786	7/8"-9 NC	6-1/8"	1-5/8"	0.375"	5000	8"
C64F106	1"-8 NC	6-1/8"	1-5/8"	0.375"	5000	8"
C64F108	1"-8 NC	8-1/8"	1-5/8"	0.375"	5000	8"

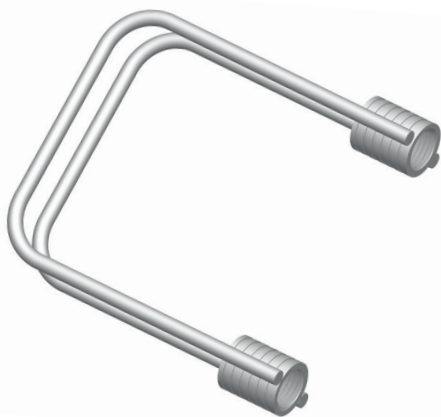
Safe working loads based on approximate 3:1 Safety Factor in 3,000 psi normal weight concrete.

Connections

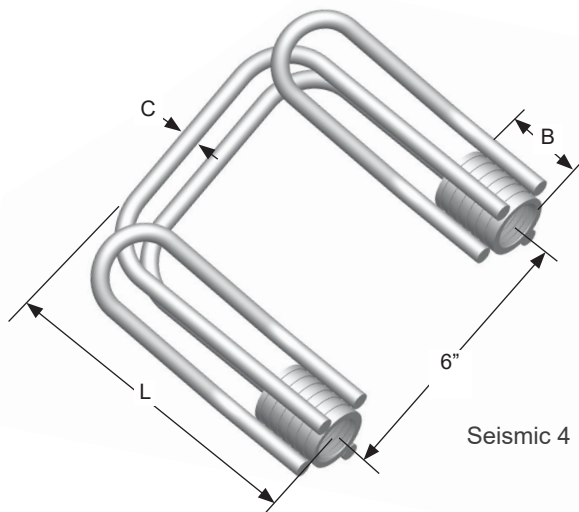
## Seismic Inserts

ITEM CODE	THREAD (D)	NOMINAL DEPTH (L)	THREAD DEPTH (B)	WIRE DIAMETER (C)	SWL (LBS)	BAR	SUGGESTED EDGE DISTANCE
SEISMIC 4-6"	1"-8 NC	6"	1-5/8"	0.375"	5670	4 Bars	6" or 9"
SEISMIC 4-8"	1"-8 NC	8"	1-5/8"	0.375"	5670	4 Bars	6" or 9"

Safe working loads based on approximate 3:1 Safety Factor in 3,000 psi normal weight concrete.



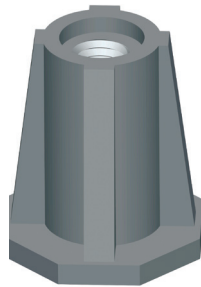
Seismic 2



Seismic 4

## Threaded Zinc Inserts

Conac Threaded Zinc Insert is zinc alloy die cast. A high strength corrosive resistant precast insert. Should not be used for lifting.



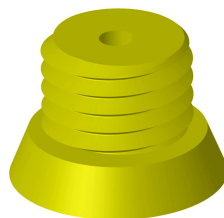
ITEM CODE	THREAD SIZE	LENGTH	SWL (LBS) SHEAR	SWL (LBS) TENSION	SUGGESTED EDGE DISTANCE
TSI 25x150	1/4"	1-1/12"	780	970	3"
TSI 38x138	3/8"	1-3/8"	910	1020	3"
TSI 38x138 ob*	3/8"	1-3/8"	910	1020	3"
TSI 50x150	1/2"	1-1/2"	1010	1250	3"
TSI 50x150 ob*	1/2"	1-1/2"	1010	1250	3"
TSI 50x278	1/2"	2-7/8"	2460	3000	5"
TSI 58x169	5/8"	1-11/16"	1090	1660	3"
TSI 58x278	5/8"	2-7/8"	2610	3030	5"
TSI 75x169	3/4"	1-11/16"	1120	1660	3"
TSI 75x3	3/4"	3"	2700	3170	5"

Safe working loads based on approximate 3:1 Safety Factor in 3,500 psi normal weight concrete.

\* ob: Open Bottom

## Threaded Plastic Plugs

Can be used with any NC threaded insert. Can be nailed to wood forms.



ITEM CODE	THREAD SIZE	COLOR	QUANTITY PER BOX
TP4014N	1/4" NC	brown	200
TP4015N	3/8" NC	black	200
TP4016N	1/2" NC	blue	100
TP4017N	5/8" NC	yellow	100
TP4018N	3/4" NC	green	100
TP4019N	7/8" NC	red	100
TP4010N	1" NC	blue	100