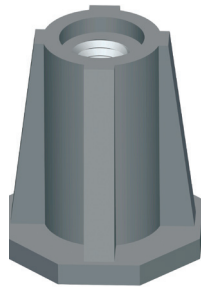


Threaded Zinc Inserts

Conac Threaded Zinc Insert is zinc alloy die cast. A high strength corrosive resistant precast insert. Should not be used for lifting.



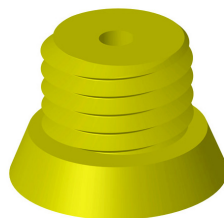
ITEM CODE	THREAD SIZE	LENGTH	SWL (LBS) SHEAR	SWL (LBS) TENSION	SUGGESTED EDGE DISTANCE
TSI 25x150	1/4"	1-1/12"	780	970	3"
TSI 38x138	3/8"	1-3/8"	910	1020	3"
TSI 38x138 ob*	3/8"	1-3/8"	910	1020	3"
TSI 50x150	1/2"	1-1/2"	1010	1250	3"
TSI 50x150 ob*	1/2"	1-1/2"	1010	1250	3"
TSI 50x278	1/2"	2-7/8"	2460	3000	5"
TSI 58x169	5/8"	1-11/16"	1090	1660	3"
TSI 58x278	5/8"	2-7/8"	2610	3030	5"
TSI 75x169	3/4"	1-11/16"	1120	1660	3"
TSI 75x3	3/4"	3"	2700	3170	5"

Safe working loads based on approximate 3:1 Safety Factor in 3,500 psi normal weight concrete.

* ob: Open Bottom

Threaded Plastic Plugs

Can be used with any NC threaded insert. Can be nailed to wood forms.



ITEM CODE	THREAD SIZE	COLOR	QUANTITY PER BOX
TP4014N	1/4" NC	brown	200
TP4015N	3/8" NC	black	200
TP4016N	1/2" NC	blue	100
TP4017N	5/8" NC	yellow	100
TP4018N	3/4" NC	green	100
TP4019N	7/8" NC	red	100
TP4010N	1" NC	blue	100