

FORGED ERECTION ANCHOR



CONAC FORGED ERECTION ANCHOR

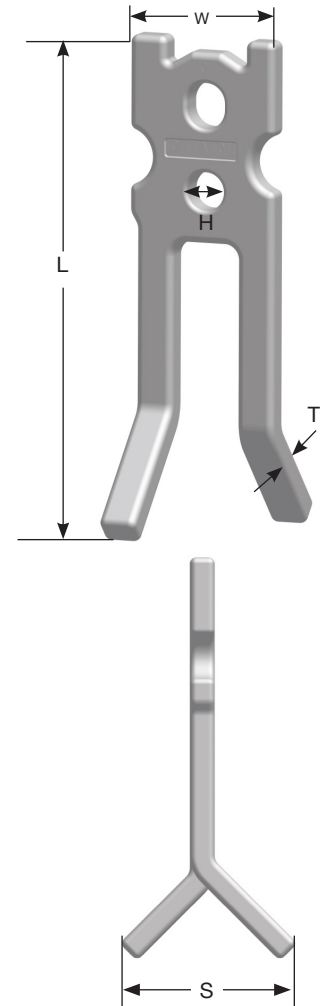
Designed to edge lift to vertical position.

TON	PART NUMBER	BODY LENGTH (L)	BODY WIDTH (W)	BODY THICK. (T)	HOLE DIA. (H)	SPREAD (S)	SWL TENSION (LBS)	UML (LBS)
6	CFEA6T	10-1/2"	2-3/4"	5/8"	3/4"	4-3/16"	12,000	48,000
11	CFEA11T	12-13/16*	4"	3/4"	1-1/8"	6"	22,000	88,000

Safe working loads based on 4:1 Safety Factor in 3,500 psi normal weight concrete.

UML=Ultimate Mechanical Load

* Note: Using this anchor to its 11 ton capacity requires use of CONAC FRC11 ring clutch.



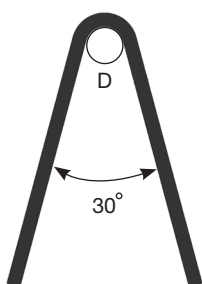
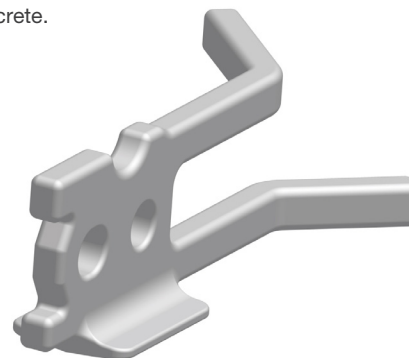
TON	SYSTEM CODE	PART NUMBER	PANEL THICKNESS	SWL SHEAR W/SHEAR PLATE (LBS)	SWL SHEAR W/SHEAR BAR (LBS)	SWL TENSION W/O TENSION BAR (LBS) **	SWL TENSION W/TENSION BAR (LBS)**
	4-6-Ton Ring Clutch (6 Ton Anchor)					N	
6	6T	CFEA6T	6"	2798	3167	O	12,000
6	6T	CFEA6T	7"	3269	3440	T	12,000
6	6T	CFEA6T	8"	3598	3726		12,000
6	6T	CFEA6T	9"	3939	4023	R	12,000
6	6T	CFEA6T	10"	4292	4331	E	12,000
6	6T	CFEA6T	11"	4655	4649	C	12,000
6	6T	CFEA6T	12"	5029	4976	O	12,000
	11-Ton Ring Clutch (11 Ton Anchor)					M	
11	11T	CFEA11T	8"	3904	4406	E	22,000
11	11T	CFEA11T	9"	4529	4685	N	22,000
11	11T	CFEA11T	10"	5184	4973	D	22,000
11	11T	CFEA11T	11"	5870	5267	E	22,000
11	11T	CFEA11T	12"	6585	5579	D	22,000

Safe working loads based on 4:1 Safety Factor in 3,500 psi normal weight concrete.

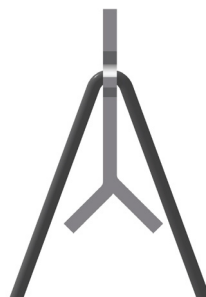
** SWL in tension is the same with or without shear plate.

FORGED ERECTION ANCHOR WITH SHEAR PLATE

Available w/shear plate upon request.



Rebar V's are required to develop SWL.



TENSION VEES	REQUIRED TO DEVELOPE REINFORCED ALLOWABLE TENSION CAPACITY					D
	Grade 60	Concrete Strength [psi]				
Load Capacity	Rebar Size	2,000	3,000	4,000	5,000	
		Length of rebar before bending [in.]				
6 Ton	#5	51	47	44	36	3-3/4"
11 Ton	#7	72	66	58	53	5-1/2"