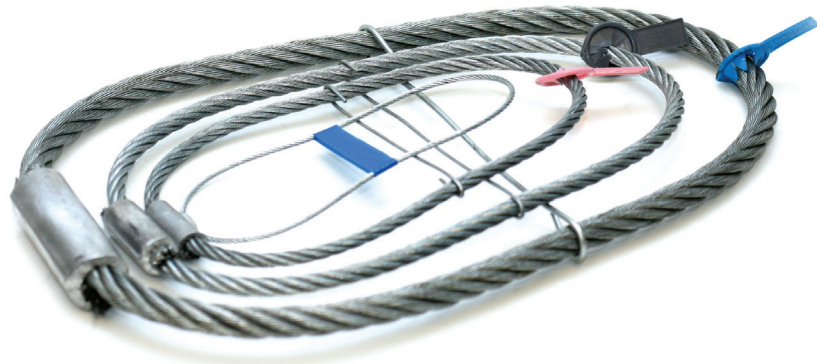


# Wire Rope

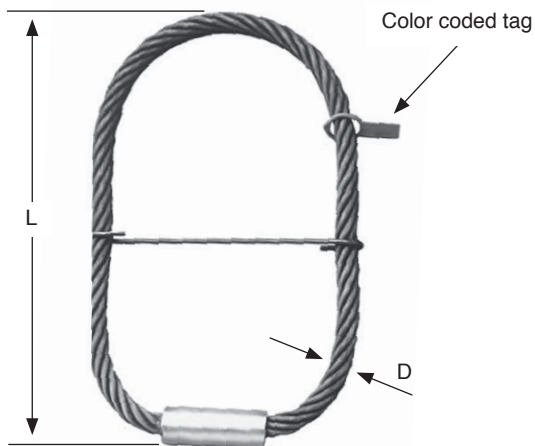
## Lifting System



Simple, pre-engineered anchors offer an economical and effective option for face lifting or edge lifting in tension. Made from high quality galvanized wire rope securely swaged together to form a loop and tagged with a color code for easy load capacity identification. Anchors may be positioned to project from the concrete, a maximum 1/3 length of loop allowing regular lifting hooks to be used. Anchors may also be recessed. The special lifting unit should be used for lifting recessed anchors. Stocked in galvanized finish.

# WIRE ROPES

## WIRE ROPE ANCHORS



PART NUMBER	COLOR CODE	SWL (TONS)	LENGTH (L)	WIRE ROPE DIAMETER (D)
WRA500	N/A	0.25	8"	3 mm (0.118")
WRA008	White	0.8	8-1/16"	6 mm (0.236")
WRA012	Red	1.2	9"	7 mm (0.276")
WRA016	Pink	1.6	9-13/16"	8 mm (0.315")
WRA016-24	Pink	1.6	24"	8 mm (0.315")
WRA016-36	Pink	1.6	36"	8 mm (0.315")
WRA020	Light Green	2	11-13/16"	9 mm (0.354")
WRA025	Dark Grey	2.5	12-13/16"	10 mm (0.394")
WRA038	Emerald Green	3.8	14-9/16"	12 mm (0.472")
WRA050	Light Yellow	5	15"	14 mm (0.551")
WRA063	Light Blue	6.3	16-3/4"	16 mm (0.630")
WRA080	Light Grey	8	18-7/8"	18 mm (0.709")
WRA099	Dark Purple	9.9	21-1/16"	20 mm (0.787")
WRA120	Yellow	12	23-1/4"	22 mm (0.866")
WRA160	Light Purple	16	26-3/8"	26 mm (1.024")
WRA180	Yellow-Green	18	29-1/2"	28 mm (1.102")
WRA250	Light Brown	25	33-1/2"	32 mm (1.260")